

# **The Beacon Arts Centre Visual Story**

A visual resource for people with Autism Spectrum Condition and/or Neurodivergence who are visiting the theatre.

This resource is intended to help prepare visitors for a new experience and to help them become familiar with surroundings before visiting the centre.

Welcome to the Beacon Arts Centre.  
This is a theatre for children and adults.



This is the box office.

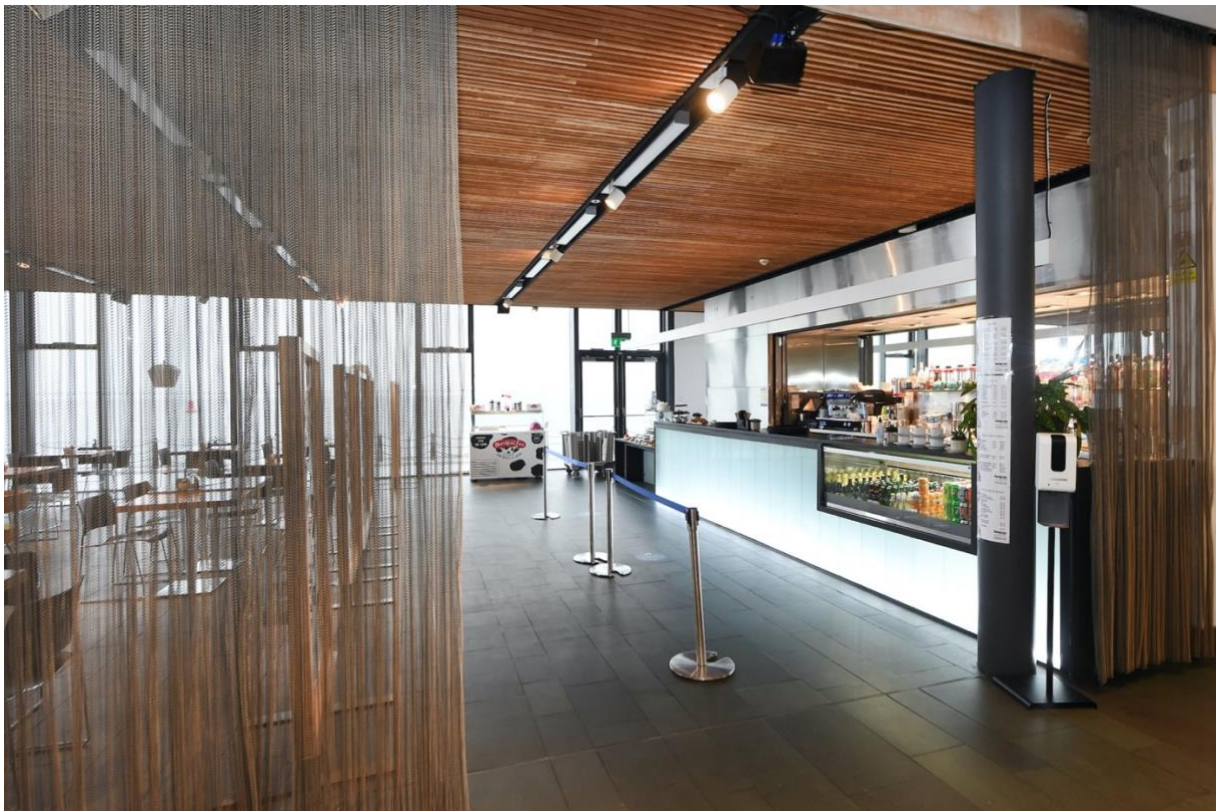


You can get your tickets here if you need to.  
It can be crowded up to 45 minutes before the  
performance.

There is a cafe across from the box office.

You can get drinks here.

It can get busy and you might have to queue.



You will see ushers wearing black t-shirts.

Ushers work for the theatre and they are here to help you if you have any questions.





If you need to go to the toilet you can look for the signs like this one.

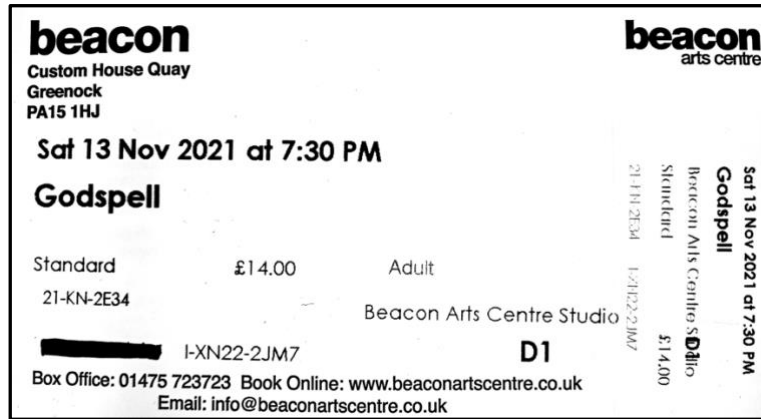


Or you can ask an usher for directions.

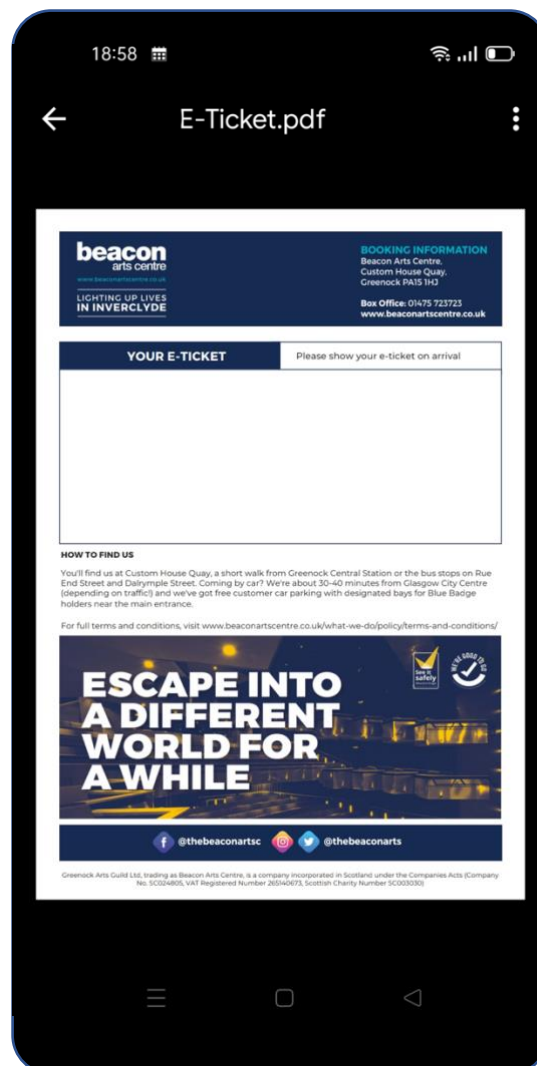
There are toilets on every level. You may need to use the accessible toilet.

You will need your tickets to get into the performance.

You might have a physical ticket a bit like this.



Or you might have your ticket on your phone like this.



You can look at your tickets to find out where you need to go. You might be going to the Theatre or the Studio.

If you are sitting in the Theatre Stalls you will go through the purple doors.





If you are sitting in the Studio you will go through the red doors.



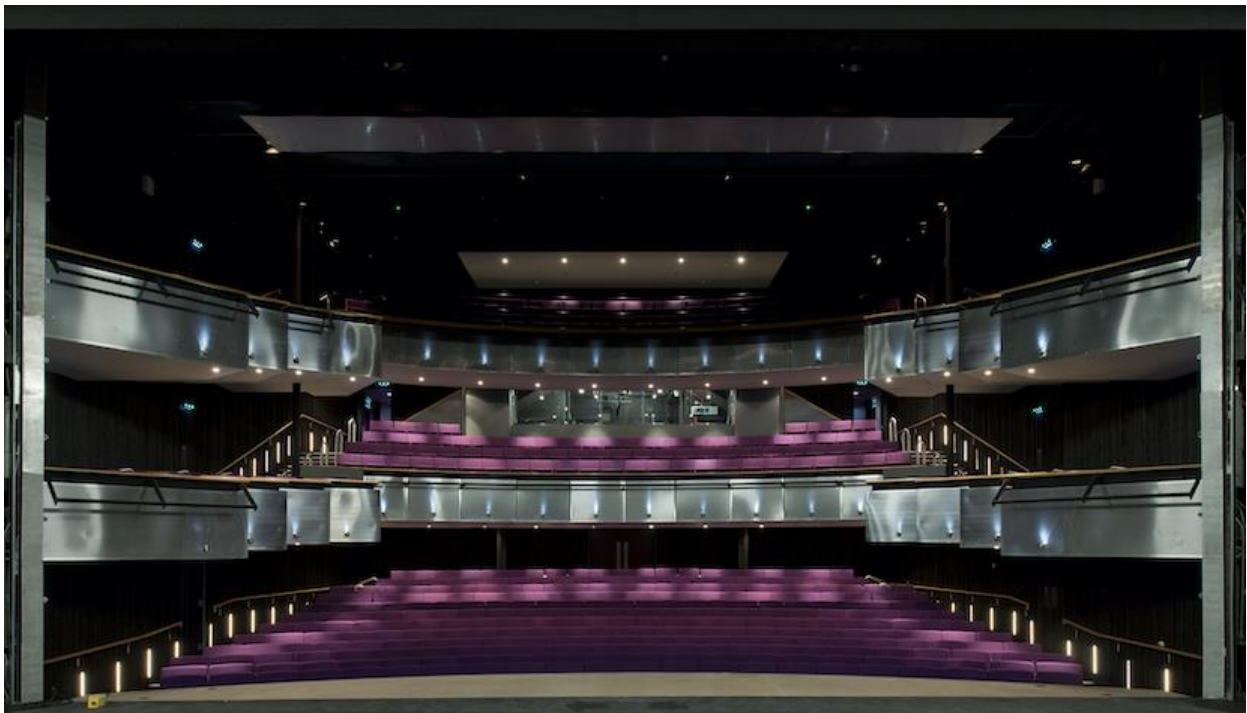
If you are in the Theatre Circle you will walk up stairs  
like this.



Or you can use the lift next to the box office.



This is a picture of the Theatre auditorium. These are the seats where the audience sit.



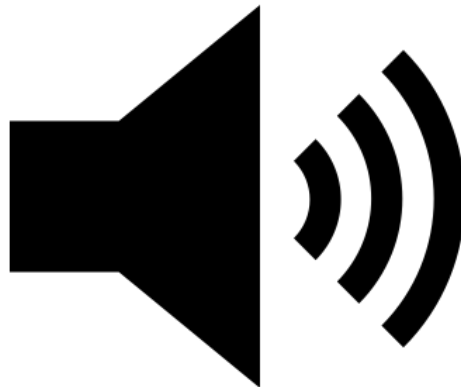
This is a picture of the Studio auditorium.  
These are the seats where the audience sit.





You will hear a loud bell ring.

This is to let you know that the show is about to start.





You should sit in your seat now. It will look like this.

All the chairs face the stage.



When the performance is about to start the lights will  
go out and the theatre will be dark.

Everyone will try to be quiet and sit still.

You will try to sit still and quietly.



Some people will make some noise but this is nothing  
to worry about.

During the performance you might see or hear the actors make a joke. Some of the audience will laugh.

You can too if you like.

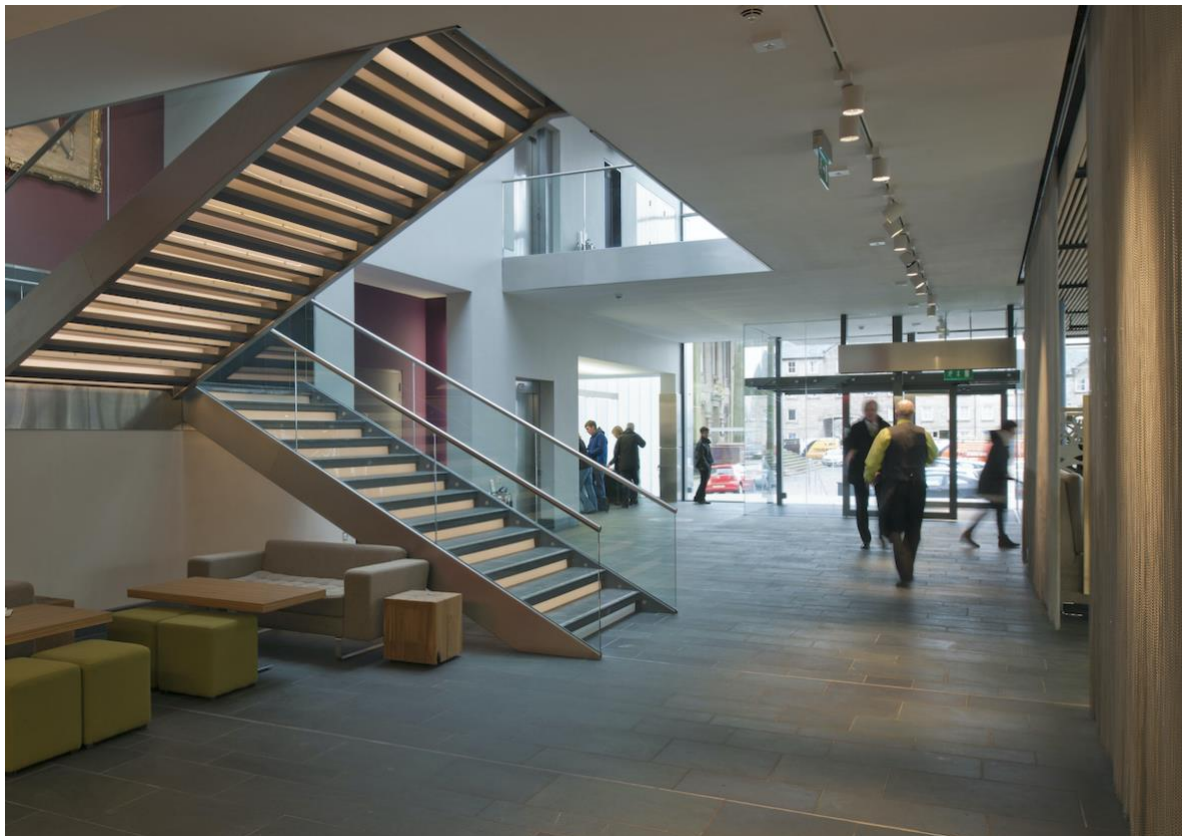


During the performance you might see or hear something that makes you feel sad. This is okay.



If you would like to take some time out you can leave  
your seat and go to the foyer to relax.

Try to be quiet when you leave the theatre.



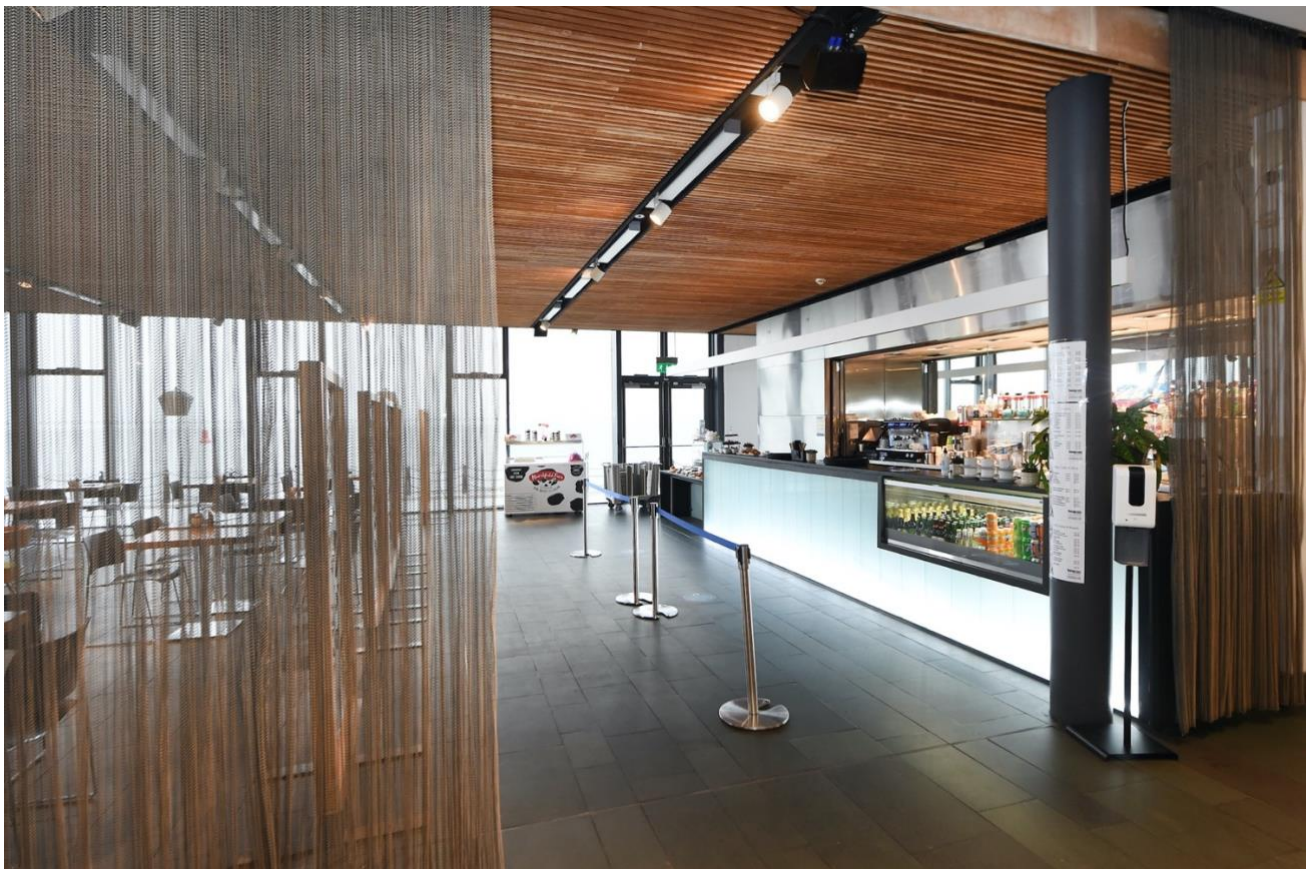
If there is an emergency you need to follow signs like this with your companion. Ushers will also be there to show you where to go.





Halfway through the show there will be a break called an 'interval'. The lights will come on. The interval will last for 15 minutes.

You can go to the cafe to buy a drink if you would like.



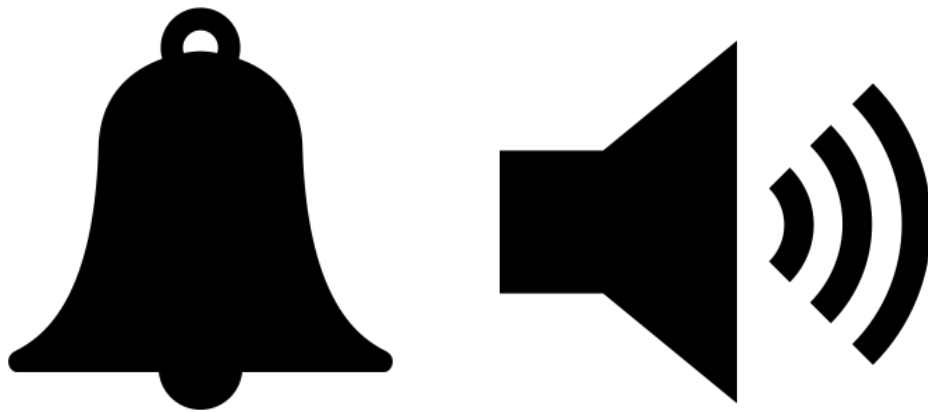
Or you can go to the bar upstairs.

You might have to queue.



At the end of the interval, a loud bell will ring again.  
If you are not already in your seat you should go back  
to it and sit down.

The room will go dark again and you should try to be  
still and quiet.

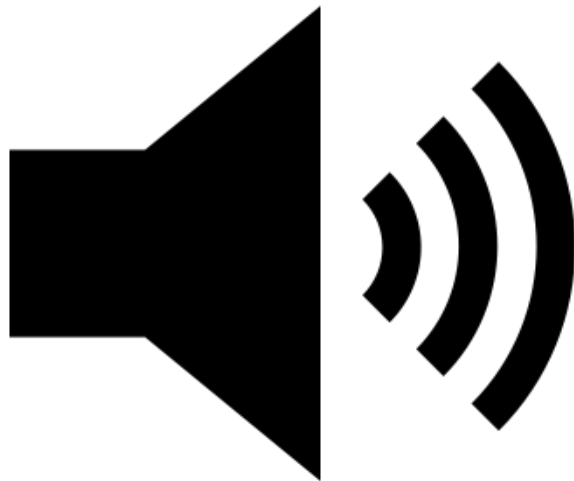


At the end of the show everyone will clap their hands  
to show the actors they enjoyed their performance.

You can clap your hands too if you like.



The clapping can be very loud. You can cover your ears if it is too loud.





When the performance has finished the lights will come back on. You will now leave the theatre through the door you came in.



An usher can show you the way.  
It might be busy when you are leaving.



Thank you for visiting the Beacon.

We hope you enjoyed your time here and that you  
visit us again soon.

